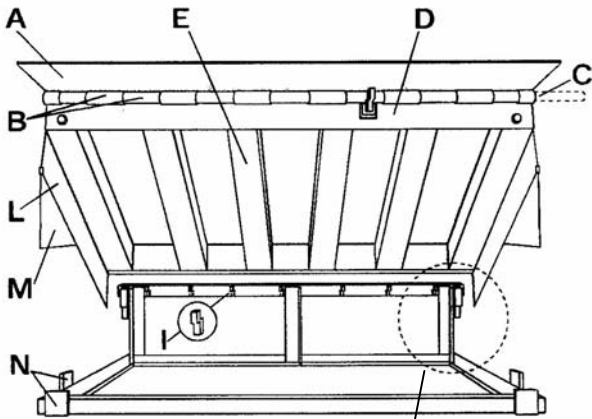
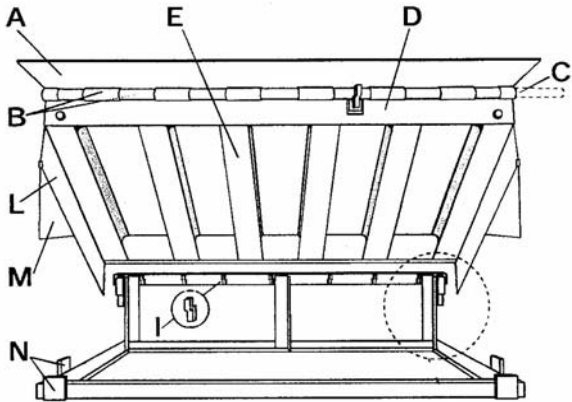


DOCK-RAMP
DOCK LEVELER

TECHNICAL & MATERIAL
SPECIFICATIONS



“C” SERIES
Box Beam Design



“T” SERIES
“T” Beam Design

NOTES:
“C” Series DRMD-C Mechanical and DRHD-C Hydraulic docks available in 6’, 6’6”, and 7’ width X 6’and 8’length models.
“I” Series DRMD Mechanical and DRHD Hydraulic docks are available in 6’,6’6”, and 7’width X 6’, 8’, 10’ and 12” length models.

Specifications based on standard 6’ wide nominal length models up to 8’long with 16” long lip. (Longer lips available – consult factory.)
Options may effect specifications – consult factory.

NOTE: Some detail has been omitted from illustration.

Available in both Mechanical and Hydraulic models				Available in both Mechanical and Hydraulic models				Available in Hydraulic models only.			
DRAWING REF.	CAPACITY: MODEL: Specification	25,000lb (11,365kg) “C” Series DRHD - C DRMD - C	30,000lb (13,635kg) “C” Series DRHD - C DRMD - C	35,000lb (15,910kg) “C” Series DRHD - C DRMD - C	30,000lb (13,635kg) “I” Series DRMD / DRHD/ DRHD-FH	35,000lb (15,910kg) “I” Series DRMD / DRHD/ DRHD-FH	40,000lb (18,180kg) “I” Series DRMD / DRHD/ DRHD-FH	45,000lb (20,455kg) “I” Series DRMD / DRHD/ DRHD-FH	50,000lb (22,730kg) “I” Series DRMD / DRHD/ DRHD-FH	60,000lb (27,270kg) “I” Series DRHD/ DRHD-FH	80,000lb (36,365kg) “I” Series DRHD/ DRHD-FH
	Frame Depth	19-½” Front, 19” Rear	19-½” Front, 19” Rear	19-½” Front, 19” Rear	19-½” Front, 19” Rear	19-½” Front, 19” Rear	19-½” Front, 19” Rear	19-½” Front, 19” Rear	19-½” Front, 19” Rear	19-½” Front, 19” Rear	19-½” Front, 19” Rear
	Travel Range	12” above and below dock level	12” above and below dock level	12” above and below dock level	12” above and below dock level	12” above and below dock level	12” above and below dock level	12” above and below dock level	12” above and below dock level	12” above and below dock level	12” above and below dock level
A	Tread Plate Lip ⁽¹⁾	½” thick high tensile	½” thick high tensile	¾” thick high tensile	¾” thick high tensile	¾” thick high tensile	¾” thick high tensile	¾” thick high tensile	¾” thick high tensile	¾” thick high tensile	¾” thick high tensile
	Lip Length (bevelled)	16”	16”	16”	16”	16”	16”	16”	16”	16”	16”
	Lip Support Plate / gussets	NA- six lip gussets on 18” & 20” lips.	NA- six lip gussets on 18” & 20” lips.	NA- six lip gussets on 18” & 20” lips.	NA	NA- six lip gussets on 18” & 20” lips.	NA six lip gussets	NA six lip gussets	NA six lip gussets	¾” lip support plate - six lip gussets	¾” lip support plate - six lip gussets
B	Lip Hinge (seamless) Spools ⁽²⁾	1-¾” dia.	2” dia.	2” dia.	2” dia.	2” dia.	2” ⅛” dia.	2-⅛” dia. w/ gussets	2-⅛” dia. w/ gussets	3” dia. w/ gussets	3” dia. w/ gussets
C	Lip Hinge Pin (full deck width)	1” dia.	1-⅛” dia.	1-⅛” dia.	1-⅛” dia.	1-⅛” dia.	1-¼” dia.	1-¼” dia.	1-¼” dia.	1-⅛” dia.	1-⅛” dia.
D	Head Board (full weld to deck support)	6”H x ¾” thick	6” H x ¾” thick	6” H x ¾” thick	6”H x ¾” thick	6”H x ¾” thick	6”H x ¾” thick	6”H x ¾” thick	6”H x ¾” thick	6”H x ¾” thick	6”H x ¾” thick
E	Structural Deck Support (high tensile)	12 gauge Box Beams Six ea.	10 gauge Box Beams Six ea.	10 gauge Box Beams Six ea.	6” x 4” I-Beams Six ea.	6” x 4” I-Beams Six ea. For 6’& 8’L Eight ea. For 10’ 12’L	6” x 4” I-Beams Eight ea.	6” x 4” I-Beams Eight ea.	6” x 4” I-Beams Eight ea.	6” x 4” I-Beams, Eight ea. 6’x3.6” Heavy Duty I-Beams for 12’L	6’x3.6” Heavy Duty I-Beams, Eight ea., Ten ea. For 7’W
	Deck and Beam Gussets	6’6”W and 7’W models only	6’6”W and 7’W models only	6’6”W and 7’W models only	6’6”W and 7’W models only	6’6”W and 7”W x 6’ and 8’L models	NA	NA	NA	NA	NA
	Thread Plate Deck Thickness ⁽³⁾	¾” high tensile	¾” high tensile	¾” high tensile	¾” high tensile	¾” high tensile	¾” high tensile	¾” high tensile	¾” high tensile	¾” high tensile	¾” high tensile
F	Maintained Deck Tilt	Standard 4°	Standard 4°	Standard 4°	Standard 4°	Standard 4°	Standard 4°	Standard 4°	Standard 4°	Standard 4°	Standard 4°
G	Rear Hinge Pin (full deck width)	1” dia.	1” dia.	1” dia.	1” dia.	1” dia.	1” dia.	1” dia.	1” dia.	1” dia.	1” dia.
H	Rear Toe Guards	7 gauge	7 gauge	7 gauge	7 gauge	7 gauge	7 gauge	7 gauge	7 gauge	7 gauge	7 gauge
I	Hinge Blocks (c/w rear frame support	¾” Wide Five ea.	¾” Wide Seven ea.	¾” Wide Seven ea.	¾” Wide Seven ea.	¾” Wide Seven ea.	¾” Wide Seven ea.	¾” Wide Seven ea.	¾” Wide Seven ea.	1-⅛” Wide, Nine ea., Ten ea. On 7’W model	1-⅛” Wide, Nine ea., Ten ea. On 7’W model
J	Frame Back Plate (full deck width)	3”H x ¾” thick	3”H x ¾” thick	3”H x ¾” thick	3”H x ¾” thick	3”H x ¾” thick	3”H x ½” thick	3”H x ½” thick	3”H x ½” thick	3”H x ¾” thick	3”H x ¾” thick
K	Frame Members	7 gauge formed and ¼” structural angle	7 gauge formed and ¼” structural angle	7 gauge formed and ¼” structural angle	7 gauge formed and ¼” structural angle	7 gauge formed and ¼” structural angle	7 gauge formed and ¼” structural angle	7 gauge formed and ¼” structural angle	7 gauge formed and ¼” structural angle	7 gauge formed and ¼” structural angle	7 gauge formed and ¼” structural angle
L	Structural Toe Guard Protection	12 gauge, stationary OSHA safety striping	12 gauge, stationary OSHA striping	12 gauge, stationary OSHA safety striping	12 gauge, stationary OSHA safety striping	12 gauge, stationary OSHA safety striping	12 gauge, stationary OSHA safety striping	12 gauge, stationary OSHA safety striping	12 gauge, stationary OSHA safety striping	12 gauge, stationary OSHA safety striping	12 gauge, stationary OSHA safety striping
M	Full Range Toe Guard Protection*	12 gauge, sliding OSHA safety Yellow	12 gauge, sliding OSHA safety Yellow	12 gauge, sliding OSHA safety Yellow	12 gauge, sliding OSHA safety Yellow	12 gauge, sliding OSHA safety Yellow	12 gauge, sliding OSHA safety Yellow	12 gauge, sliding OSHA safety Yellow	12 gauge, sliding OSHA safety Yellow	12 gauge, sliding OSHA safety Yellow	12 gauge, sliding OSHA safety Yellow
N	Corner Safety Stops/ Lip Keepers (night locks)	Standard	Standard	Standard	Standard	Standard	Standard	Standard	Standard	Standard	Standard
	Safety Maintenance Strut	1-¼” square, telescopic	1-¼” square, telescopic	1-¼” square, telescopic	1-¼” square, telescopic	1-¼” square, telescopic	1-¼” square, telescopic	1-¼” square, telescopic	1-¼” square, telescopic	1-¼” square, telescopic Two ea.	1-¼” square, telescopic Two ea.
	Molded Rubber Bumpers	Two ea. 10”W x 13”H x 4”D	Two ea. 10”W x 13”H x 4”D	Two ea. 10”W x 13”H x 4”D	Two ea. 10”W x 13”H x 4”D	Two ea. 10”W x 13”H x 4”D	Two ea. 10”W x 13”H x 4”D	Two ea. 10”W x 13”H x 4”D	Two ea. 10”W x 13”H x 4”D	Two ea. 10”W x 13”H x 4”D	Two ea. 10”W x 13”H x 4”D
	Lifting Springs (Mechanical Models)	Four ea., heavy duty	Four ea., heavy duty	Four ea., heavy duty	Four ea., heavy duty Five ea. For 10’ and 12’	Four ea., heavy duty Five ea. For 10’ and 12’	Four ea., heavy duty Five ea. For 10’ and 12’	Four ea., heavy duty Five ea. For 10’ and 12’	Five ea., heavy duty Six ea. For 10’x 12’	NA	NA
	Cylinders (Hydraulic Models)	2” dia. lift and 2-½” dia. lip cylinders	2” dia. lift and 2-½” dia. lip cylinders	2” dia. lift and 2-½” dia. lip cylinders	2” dia. lift and 2-½” dia. lip cylinders	2” dia. lift and 2-½” dia. lip cylinders	2” dia. lift and 2-½” dia. lip cylinders	2” dia. lift and 2-½” dia. lip cylinders	2” dia. lift and 2-½” dia. lip cylinders	Two ea., 2” dia. lift cylinders One double acting 2-½” dia. lip cylinder	Two ea., 2” dia. lift cylinders One double acting 2-½” dia. lip cylinder
	Free Fall Protection* (Mechanical Models)	Mechanical fall safe legs	Mechanical fall safe legs	Mechanical fall safe legs	Mechanical fall safe legs	Mechanical fall safe legs	Mechanical fall safe legs	Mechanical fall safe legs	Mechanical fall safe legs	NA	NA
	Free Fall Protection (Hydraulic Models)	Velocity fuses Up to 3”	Velocity fuses Up to 3”	Velocity fuses Up to 3”	Velocity fuses Up to 3”	Velocity fuses Up to 3”	Velocity fuses Up to 3”	Velocity fuses Up to 3”	Velocity fuses Up to 3”	Velocity fuses Up to 3”	Velocity fuses Up to 3”
	Control Station (DRHD and DRHD - C Hydraulic Models only)	Single push button with reset NEMA 4 (water resistant), 3-¼”W x 6-½”H x 5-⅛”D	Single push button with reset NEMA 4 (water resistant), 3-¼”W x 6-½”H x 5-⅛”D	Single push button with reset NEMA 4 (water resistant), 3-¼”W x 6-½”H x 5-⅛”D	Single push button with reset NEMA 4 (water resistant), 3¼”W x 6-½”H x 8-⅛”D	Single push button with reset NEMA 4 (water resistant), 3¼”W x 6-½”H x 8-⅛”D	Single push button with reset NEMA 4 (water resistant), 3¼”W x 6-½”H x 8-⅛”D	Single push button with reset NEMA 4 (water resistant), 3¼”W x 6-½”H x 8-⅛”D	Single push button with reset NEMA 4 (water resistant), 3¼”W x 6-½”H x 8-⅛”D	Single push button with reset NEMA 4 (water resistant), 3¼”W x 6-½”H x 8-⅛”D	Single push button with reset NEMA 4 (water resistant), 3¼”W x 6-½”H x 8-⅛”D
	Control Station (DRHD - FH Hydraulic Models only)	NA	NA	NA	Multi push button NEMA 12 (oil & dust resistant) 8-¾”W x 11-½”H x 7-¼”D	Multi push button NEMA 12 (oil & dust resistant) 8-¾”W x 11-½”H x 7-¼”D	Multi push button NEMA 12 (oil & dust resistant) 8-¾”W x 11-½”H x 7-¼”D	Multi push button NEMA 12 (oil & dust resistant) 8-¾”W x 11-½”H x 7-¼”D	Multi push button NEMA 12 (oil & dust resistant) 8-¾”W x 11-½”H x 7-¼”D	Multi push button NEMA 12 (oil & dust resistant) 8-¾”W x 11-½”H x 7-¼”D	Multi push button NEMA 12 (oil & dust resistant) 8-¾”W x 11-½”H x 7-¼”D
	Power Pack Motor** (Hydraulic Models)	1 HP. Fan Cooled (TEFC) Single Phase, 60 Cycle	1 HP. Fan Cooled (TEFC) Single Phase, 60 Cycle	1 HP. Fan Cooled (TEFC) Single Phase, 60 Cycle	1 HP. Fan Cooled (TEFC) Single Phase, 60 Cycle	1 HP. Fan Cooled (TEFC) Single Phase, 60 Cycle	1 HP. Fan Cooled (TEFC) Single Phase, 60 Cycle	1 HP. Fan Cooled (TEFC) Single Phase, 60 Cycle	1 HP. Fan Cooled (TEFC) Single Phase, 60 Cycle	1 HP. Fan Cooled (TEFC) Single Phase, 60 Cycle	1 HP. Fan Cooled (TEFC) Single Phase, 60 Cycle

* Standard for U S market.
** Single and 3 phase voltages available.
(1) Tread Plate Lip – minimum 50,000 psi (300,000kPa) yield, 65,000psi (450,000kPa) ultimate tensile.
(2) Lip Hinge Spools – 70,000psi (490,000kPa) typical yield, 85,000psi (590,000kPa) ultimate tensile.
(3) Tread Plate Deck – minimum 50,000 psi (300,000kPa) yield, 65,000psi (450,000kPa) ultimate tensile.

Note: Yield and tensile strength are based on steel mill minimum guaranteed standards.

Concurrent with our continuing product improvement program, specifications are subject to change without notice.
Please contact factory for latest information.
Some features listed may be optional in certain market areas.

METRIC CONVERSION

mm - multiply inches by 25.4

kg - divide lbs. by 2.2